



## World's Fastest ICP-MS Analysis: Proven!

Look into the elements  
of the new  
OptiMass 9500  
and discover  
tomorrow's answers  
today.

# OptiMass 9500 ICP-oTOFMS

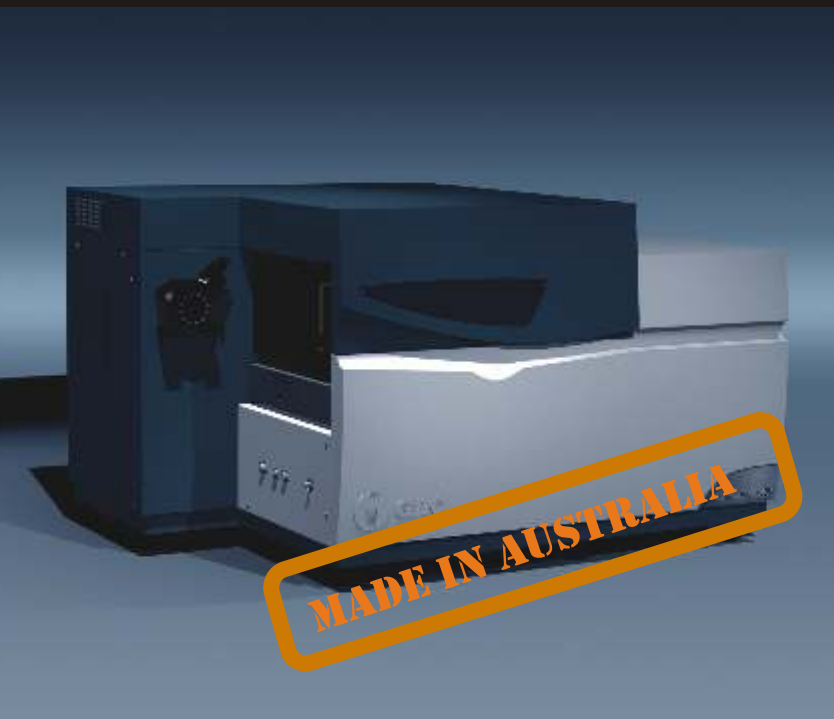
Rapid simultaneous analysis of  
all elements enables unique  
retrospective semi-quantitative  
analysis.

Today's data can be analysed  
in the future for isotopes not  
previously considered.

New Fingerprint analysis mode  
allows users to statistically  
compare spectra from different  
samples.

Mass range of 1 to 260 amu allows  
analysis of hydrogen isotopes.

Packaged USEPA environmental  
applications.



AAS



HPLC



ICP-OES



ICP-oTOFMS



Rheometry



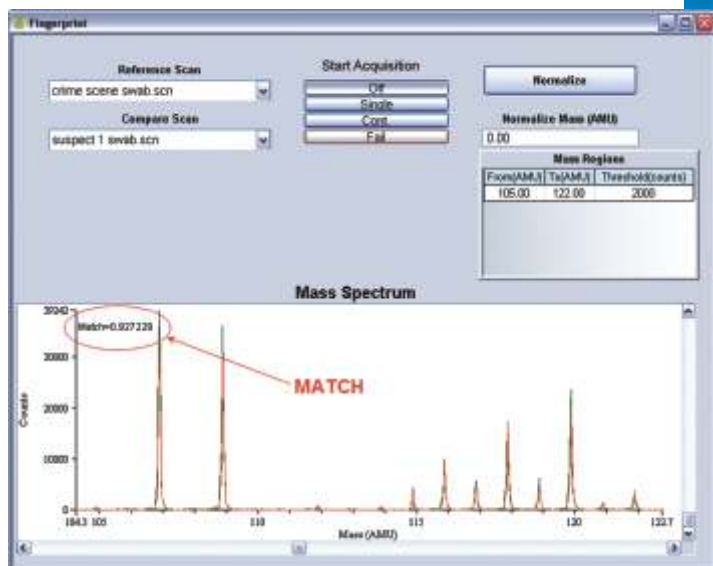
UV-Vis



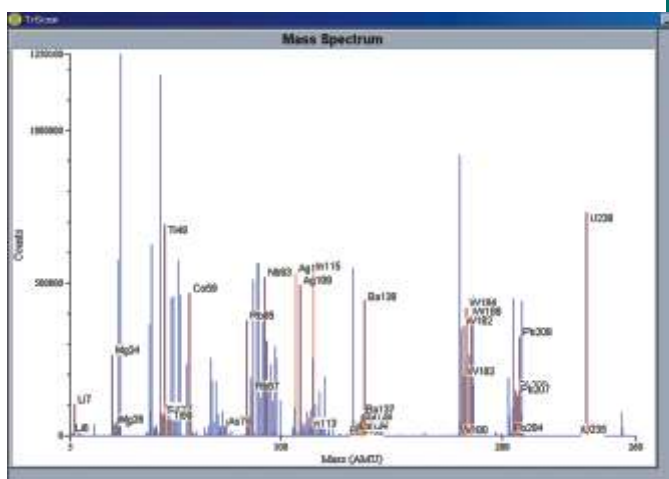
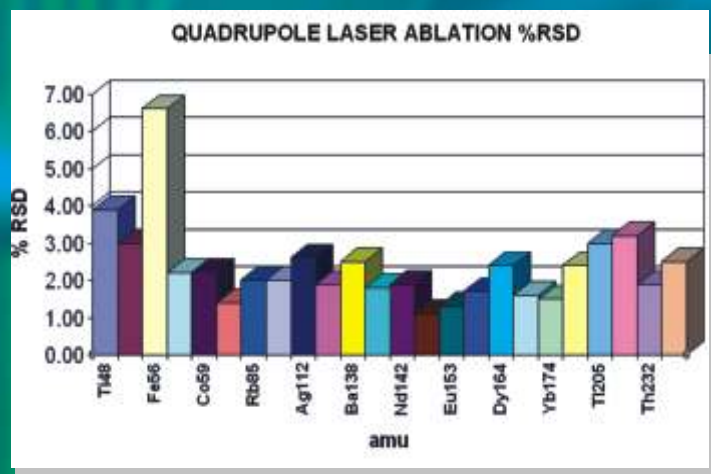
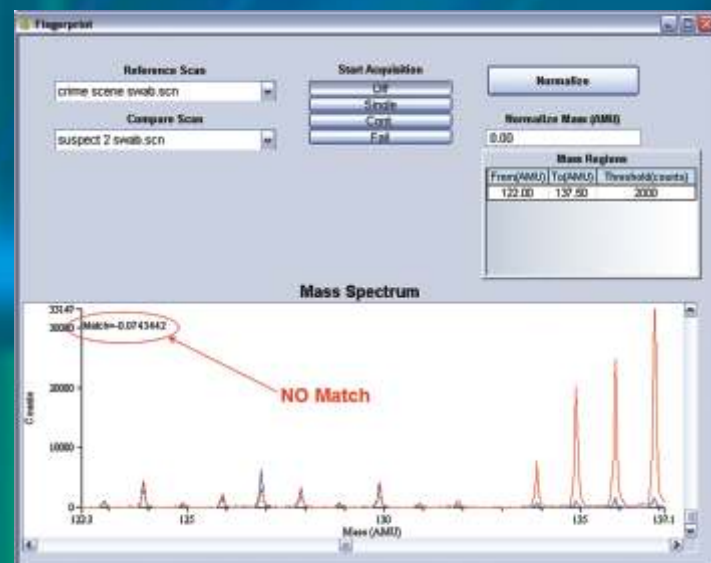
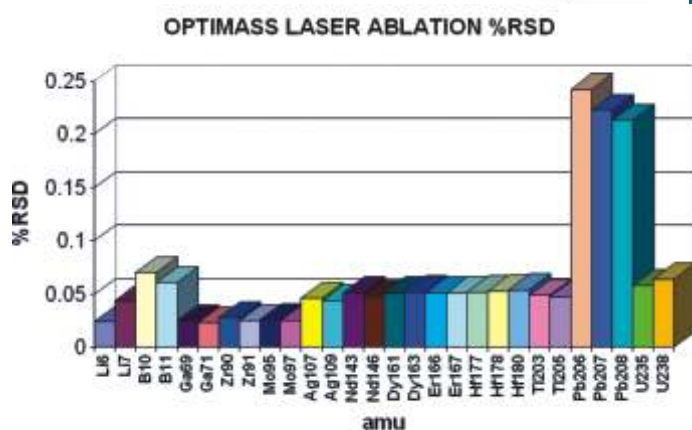
XRD



www.GBCsci.com  
SCIENTIFIC EQUIPMENT



The OptiMass 9500 offers 6 times greater stability than a standard Quadrupole.



The ICP-oTOFMS offers the unique feature of powerful retrospective semi-quantitative analysis mode not available on any other form of ICP-MS. The ICP-oTOFMS Semi-Quantitative analysis uses factory defined relative sensitivity factors (RSF) to define the detector response to an unknown concentration of analytes. The simultaneous nature of the OptiMass 9500 allows not only semi-quantitative, but also retrospective semi-quantitative analysis (RSQ).